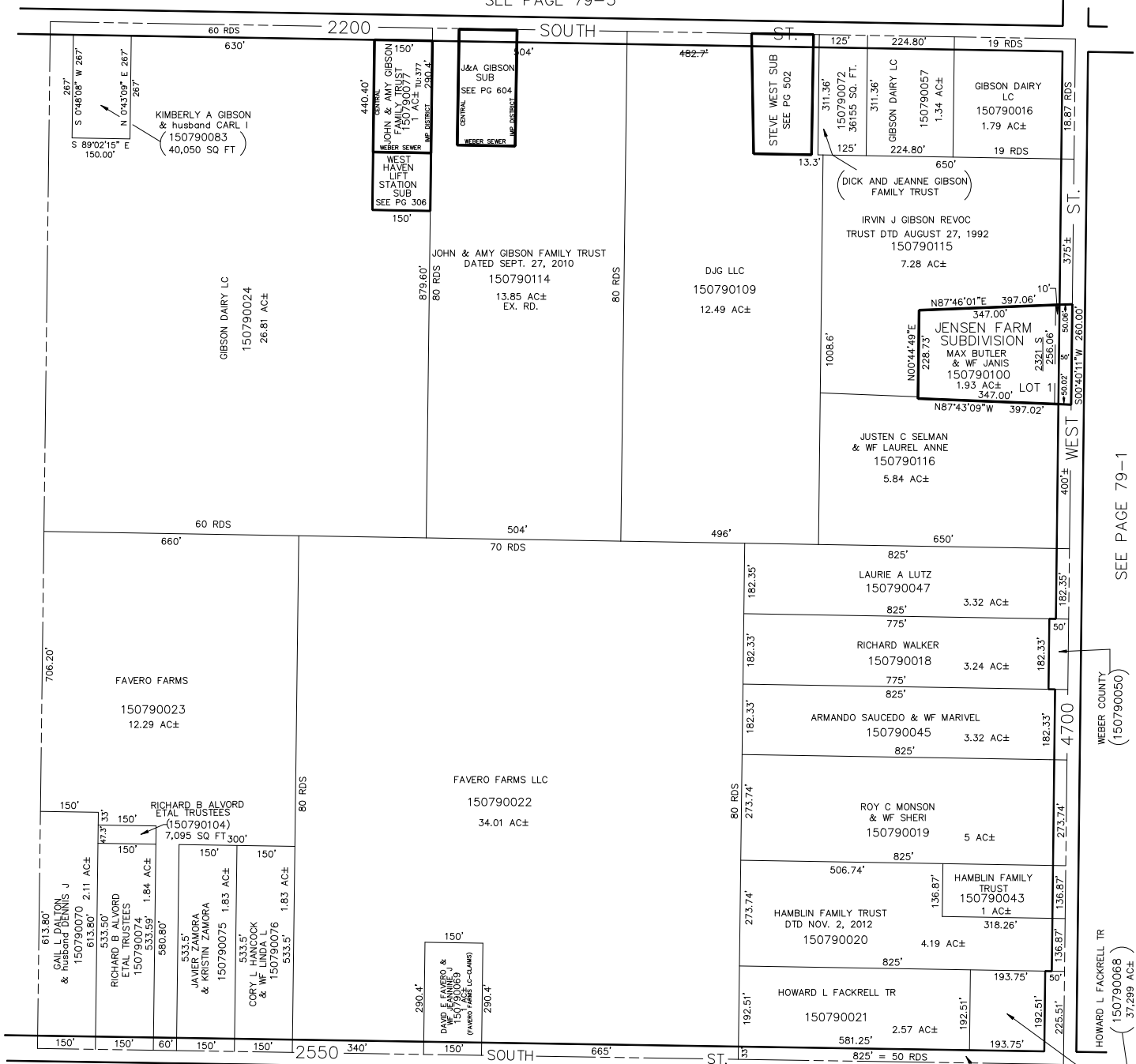


SW 1/4
SECTION 29, T.6N., R.2W., S.L.B. & M.

TAXING UNITS: 53,377

IN WEBER COUNTY
SCALE 1" = 200'
SEE PAGE 79-3

SEE PAGE 81



SEE PAGE 79-1

WEBER COUNTY
(150790050)

HOWARD L FACKRELL TR
(150790068)
(37,299 AC±)

WEBER CO.
(150790054)

SEE PAGE 86